

PHOTOMETRIC TEST REPORT

TRIMLESS PRO ROUND
ADJUSTABLE - MATT WHITE -
4002483

astro

TRIMLESS PRO ROUND ADJUSTABLE -

astro

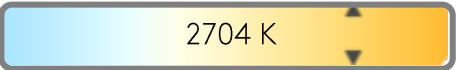
LIGHT EFFICIENCY:



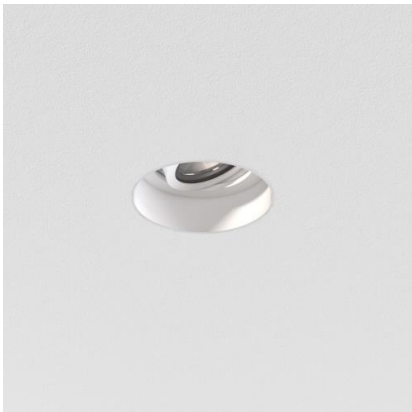
LIGHT QUALITY:



COLOR TEMPERATURE:



OUTPUT: 1192 lm
PEAK: 2236 cd
POWER: 11.8 W
PF: 0.95



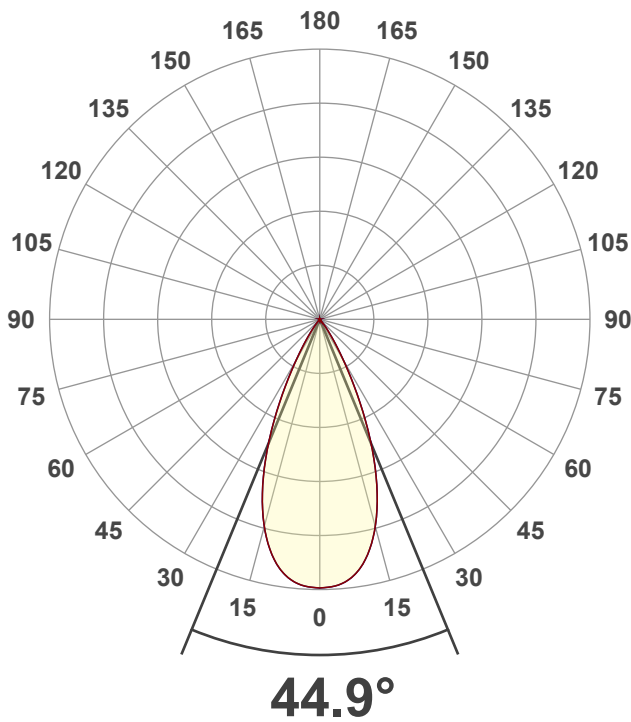
Tracking number: [n/a](#)

Product name:
Trimless Pro Round Adjustable - Matt
White - 4002483

Item number:
TRA-MW-HE27G1-50G1-X-D1

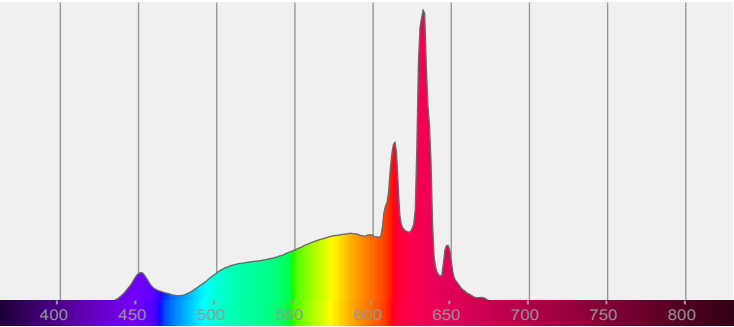
Date and time:
17/02/2025 14:20:30

Description:
IP20 LED Downlight

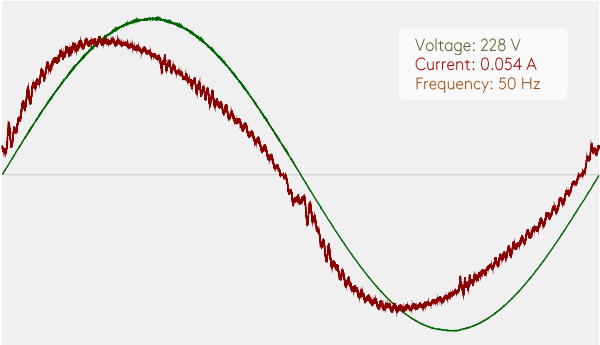


CIE 1931
x: 0.461
y: 0.413

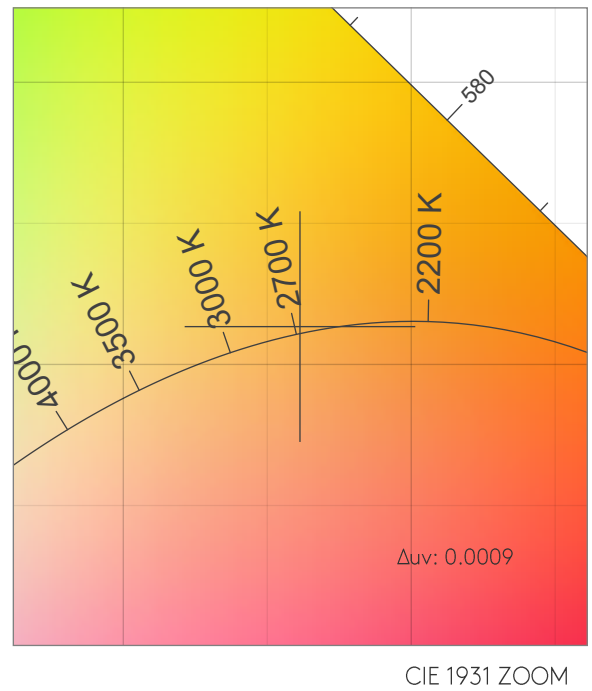
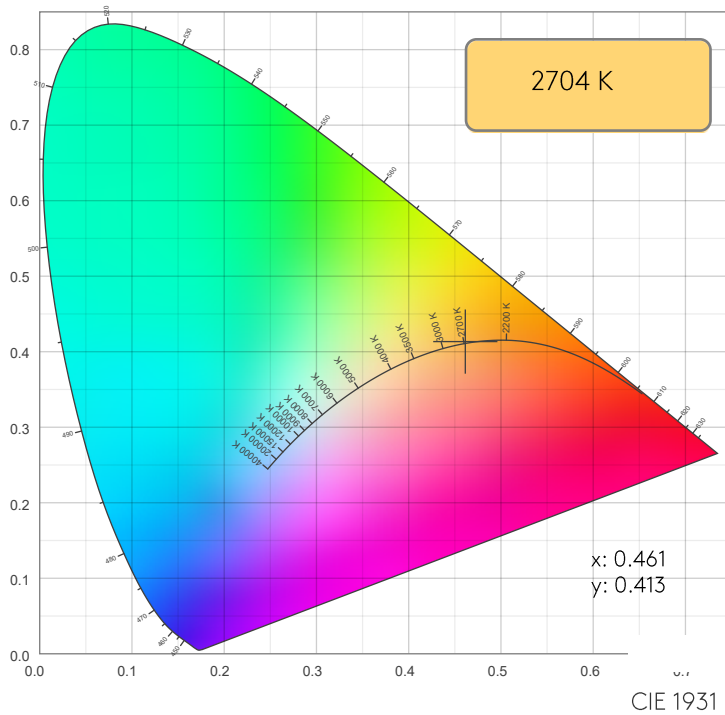
SPECTRA



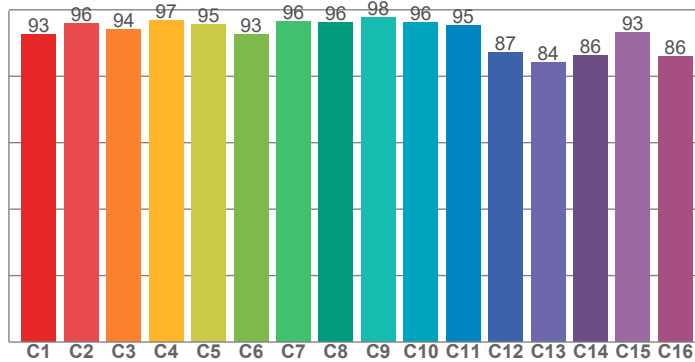
POWER



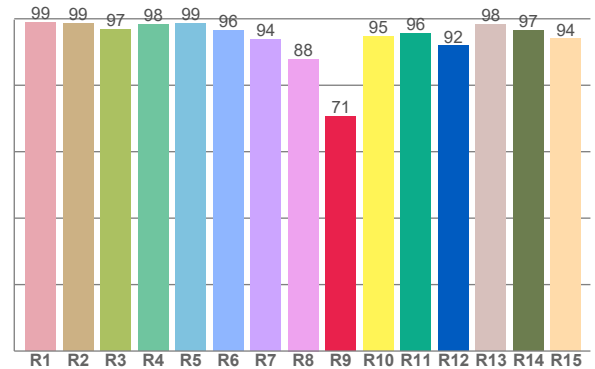
COLOR DETAILS



TM30: 93.4



CRI: 96.2 (R1-R8)



CRI R values, only R1-R8 are used to calculate final CRI value

R1	R2	R3	R4	R5	R6	R7	R8	R9	R10	R11	R12	R13	R14	R15
98.8	98.5	96.9	98.4	98.6	96.4	93.9	87.9	70.6	94.7	95.6	91.9	98.4	96.5	94.0

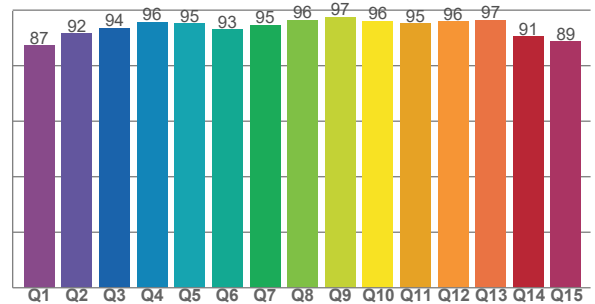
TM30 C values, 16 binned values out of total of 99 C values

C1	C2	C3	C4	C5	C6	C7	C8	C9	C10	C11	C12	C13	C14	C15	C16
92.5	96.0	94.0	96.9	95.4	92.7	96.4	96.0	97.5	96.2	95.4	87.1	84.0	86.2	93.3	86.1

CQS Q values

Q1	Q2	Q3	Q4	Q5	Q6	Q7	Q8	Q9	Q10	Q11	Q12	Q13	Q14	Q15
87.2	91.5	93.6	95.7	95.1	93.1	94.6	96.4	97.4	96.1	95.3	95.8	96.5	90.6	88.6

CQS: 92.8



COLOR PARAMETERS

Color temperature	Color rendering index	Red component	Color fidelity	Color gamut	Color quality scale	Color coordinate cie 1931	Color coordinate cie 1931	Color coordinate	Color coordinate	Color deviation from black body
CCT	CRI	CRI R9	TM30 Rf	TM30 Rg	CQS	x	y	u	v	Δuv
2704 K	96.2	70.6	93.4	100.2	92.8	0.461	0.413	0.262	0.352	0.0009

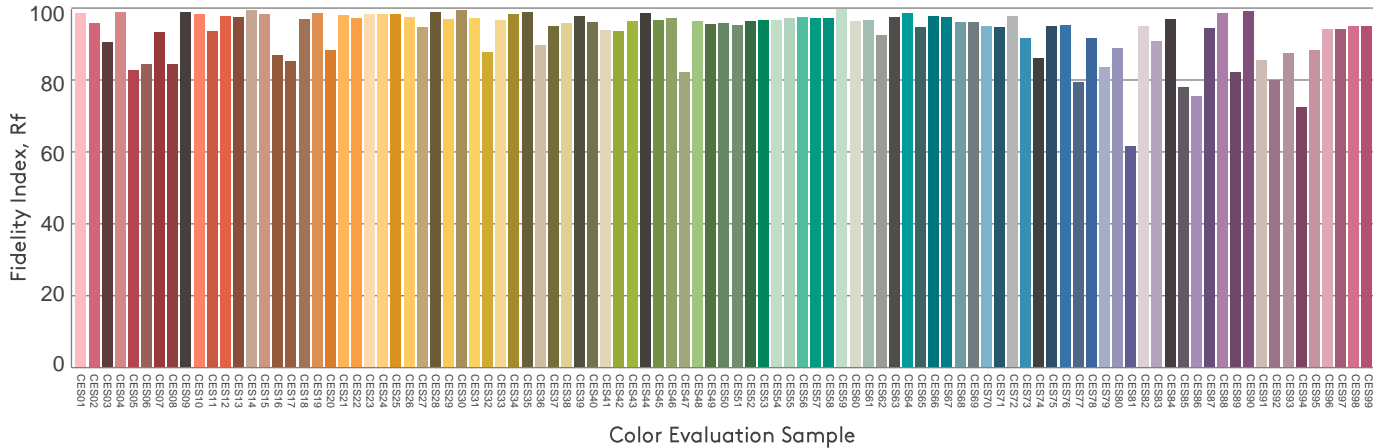
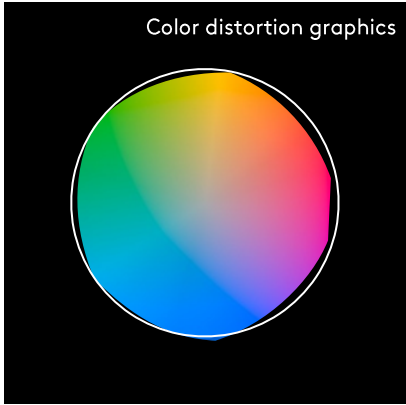
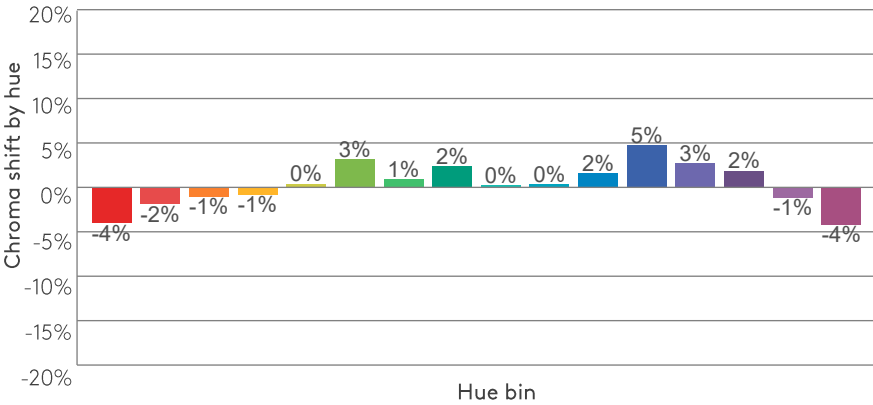
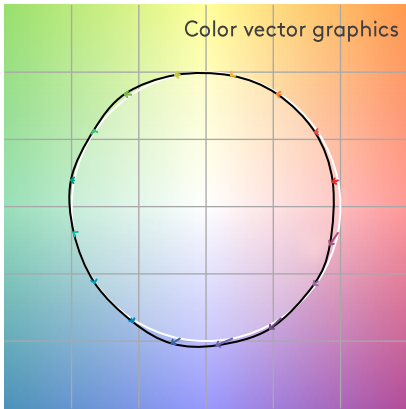
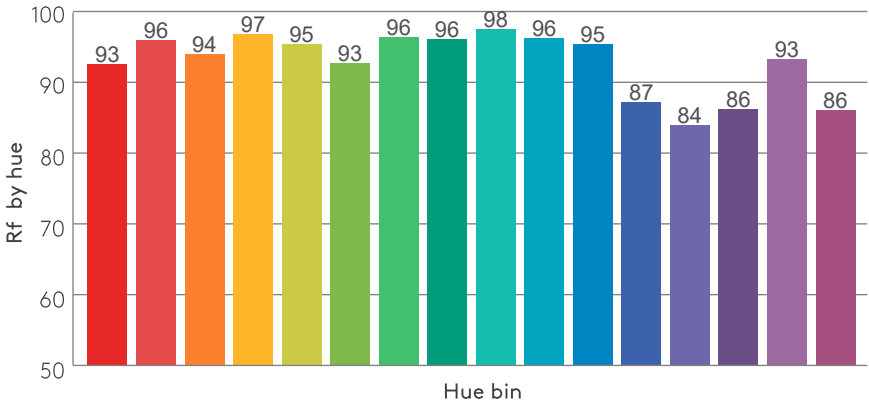
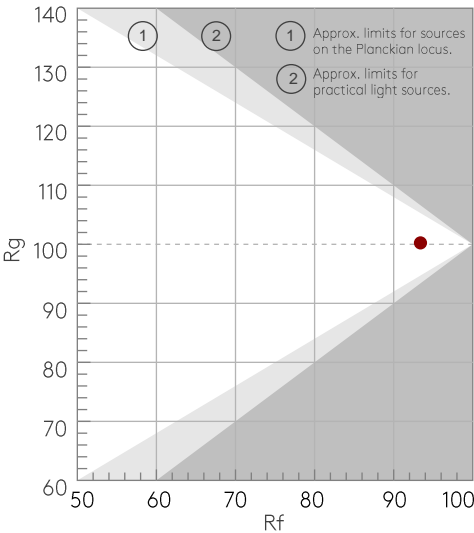
Rf 93.4

Fidelity index R_f

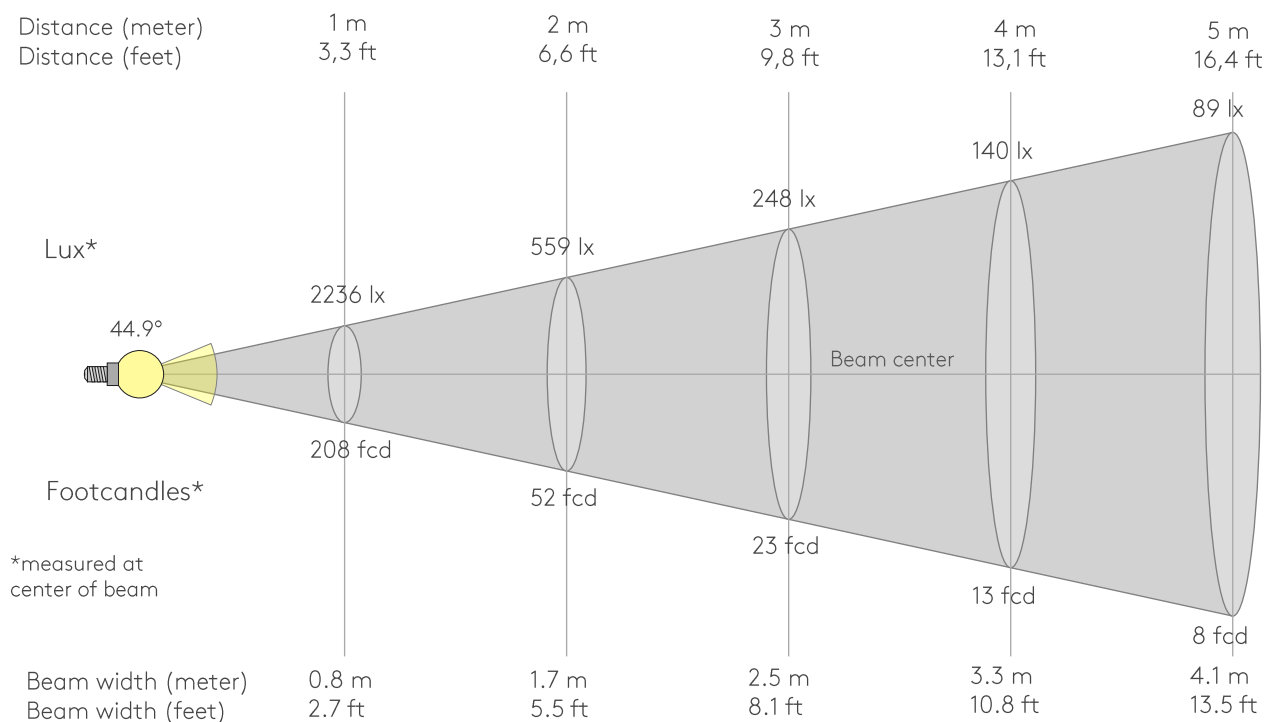
Rg 100.2

Gammut index R_g

Hue Bin	R_f	Graphic shifts (%)	
		Chroma	Hue
1	93	-4%	0%
2	96	-2%	1%
3	94	-1%	3%
4	97	-1%	1%
5	95	0%	3%
6	93	3%	4%
7	96	1%	-1%
8	96	2%	0%
9	98	0%	0%
10	96	0%	1%
11	95	2%	3%
12	87	5%	-5%
13	84	3%	-12%
14	86	2%	-11%
15	93	-1%	-4%
16	86	-4%	-10%



BEAM DETAILS



Beam intensities from 1-20m

1m	2m	3m	4m	5m	6m	7m	8m	9m	10m	11m	12m	13m	14m	15m	16m	17m	18m	19m	20m
3.3ft	6.6ft	9.8ft	13.1ft	16.4ft	19.7ft	23ft	26.2ft	29.5ft	32.8ft	36.1ft	39.4ft	42.7ft	45.9ft	49.2ft	52.5ft	55.8ft	59.1ft	62.3ft	65.6ft
2236lx	559lx	248lx	140lx	89lx	62lx	46lx	35lx	28lx	22lx	18lx	16lx	13lx	11lx	10lx	9lx	8lx	7lx	6lx	6lx
207.7fcd	51.9fcd	23.1fcd	13fcd	8.3fcd	5.8fcd	4.2fcd	3.2fcd	2.6fcd	2.1fcd	1.7fcd	1.4fcd	1.2fcd	1.1fcd	0.9fcd	0.8fcd	0.7fcd	0.6fcd	0.6fcd	0.5fcd

Intensities in 0° c-plane

0°	2°	4°	6°	8°	10°	12°	14°	16°	18°	20°	22°	24°	26°	28°	30°	32°	34°	36°	38°
2236	2231	2216	2187	2138	2066	1971	1852	1709	1546	1363	1163	954	747	557	396	270	176	107	59
100%	100%	99%	98%	96%	92%	88%	83%	76%	69%	61%	52%	43%	33%	25%	18%	12%	8%	5%	3%

Intensities in 90° c-plane

0°	2°	4°	6°	8°	10°	12°	14°	16°	18°	20°	22°	24°	26°	28°	30°	32°	34°	36°	38°
2236	2231	2216	2187	2138	2066	1971	1852	1709	1546	1363	1163	954	747	557	396	270	176	107	59
100%	100%	99%	98%	96%	92%	88%	83%	76%	69%	61%	52%	43%	33%	25%	18%	12%	8%	5%	3%

Intensities in 180° c-plane

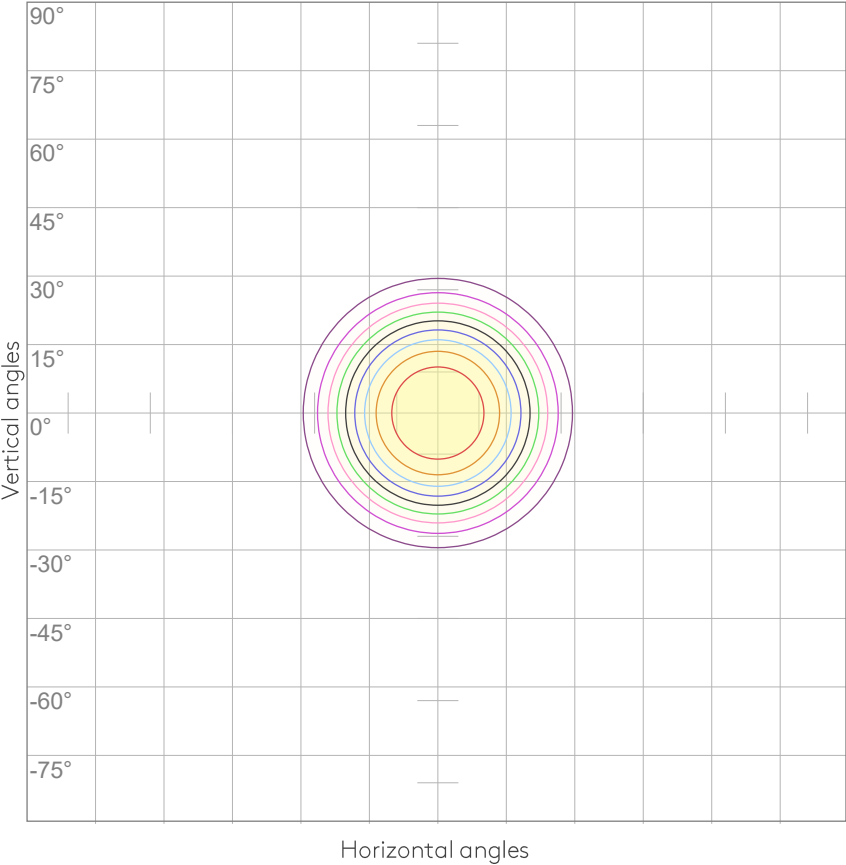
0°	2°	4°	6°	8°	10°	12°	14°	16°	18°	20°	22°	24°	26°	28°	30°	32°	34°	36°	38°
2236	2231	2216	2187	2138	2066	1971	1852	1709	1546	1363	1163	954	747	557	396	270	176	107	59
100%	100%	99%	98%	96%	92%	88%	83%	76%	69%	61%	52%	43%	33%	25%	18%	12%	8%	5%	3%

Intensities in 270° c-plane

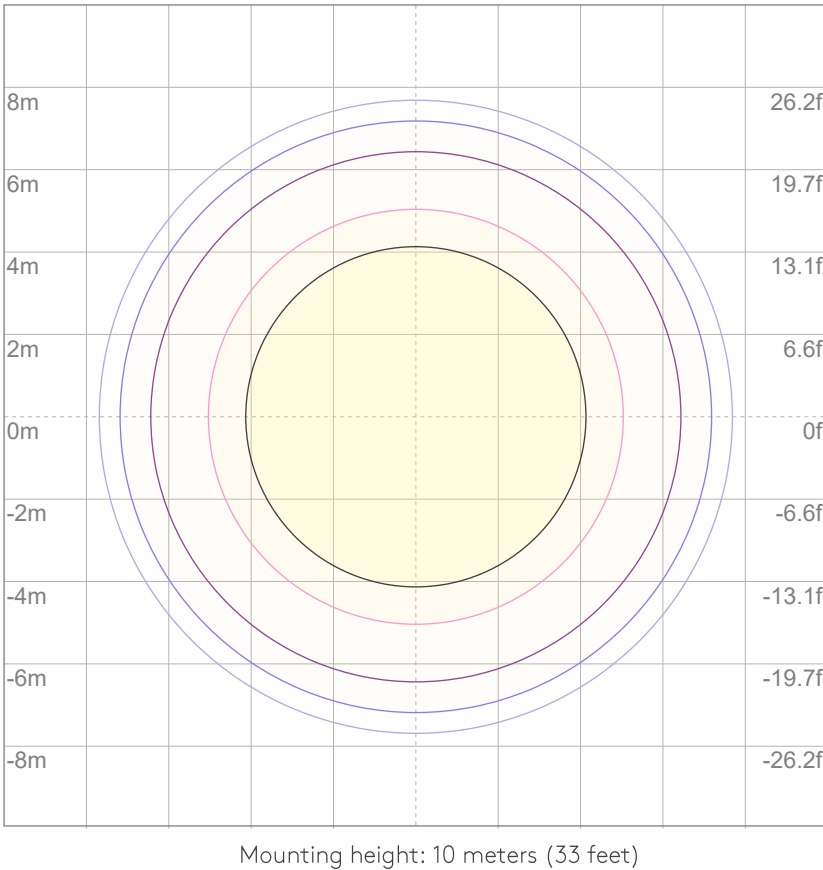
0°	2°	4°	6°	8°	10°	12°	14°	16°	18°	20°	22°	24°	26°	28°	30°	32°	34°	36°	38°
2236	2231	2216	2187	2138	2066	1971	1852	1709	1546	1363	1163	954	747	557	396	270	176	107	59
100%	100%	99%	98%	96%	92%	88%	83%	76%	69%	61%	52%	43%	33%	25%	18%	12%	8%	5%	3%

Beam angle 50%	Field angle 10%	Cutoff angle 2,5%	Intensity ratio in 120° cone	Intensity ratio in 90° cone
44.9°	65.8°	76.4°	99.7%	99.1%

ISO CANDELA DIAGRAM



ISO LUX DIAGRAM



UGR

GLARE EVALUATION ACCORDING TO UGR

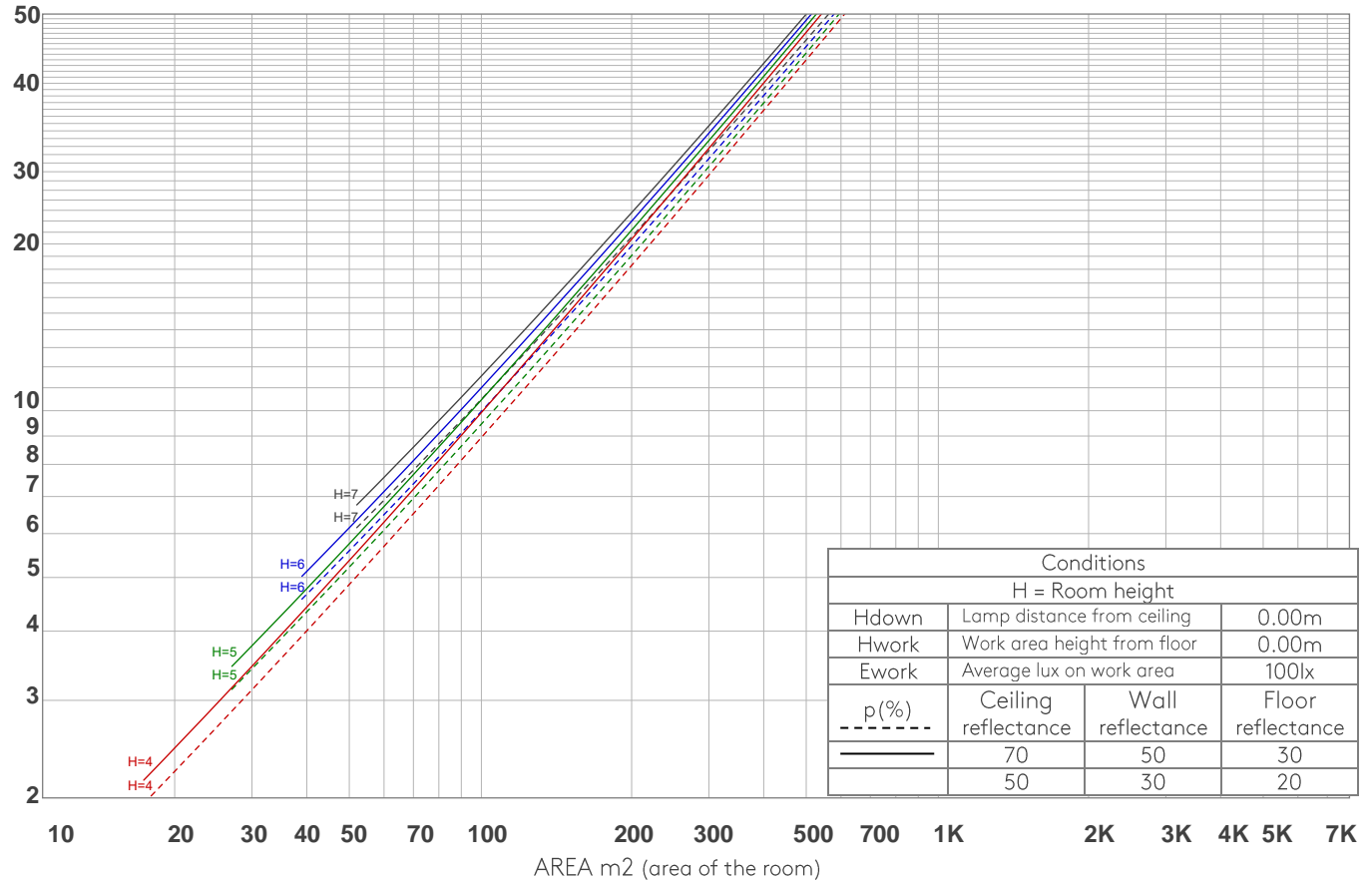
p Ceiling		70	70	50	50	30	70	70	50	50	30
p Walls		50	30	50	30	30	50	30	50	30	30
p Floor		20	20	20	20	20	20	20	20	20	20
Room size X Y		Viewing direction at right angles to lamp axis					Viewing direction parallel to lamp axis				
2H	2H	17.6	18.1	17.7	18.3	18.5	17.6	18.1	17.7	18.3	18.5
	3H	17.3	17.9	17.6	18.1	18.3	17.3	17.9	17.6	18.1	18.3
	4H	17.2	17.8	17.6	18.1	18.3	17.2	17.8	17.6	18.1	18.3
	6H	17.2	17.7	17.5	18.0	18.4	17.2	17.7	17.5	18.0	18.4
	8H	17.1	17.6	17.5	18.0	18.4	17.1	17.6	17.5	18.0	18.4
	12H	17.1	17.6	17.4	17.9	18.4	17.1	17.6	17.4	17.9	18.4
4H	2H	17.2	17.8	17.6	18.0	18.3	17.2	17.8	17.6	18.0	18.3
	3H	17.1	17.6	17.4	17.9	18.3	17.1	17.6	17.4	17.9	18.3
	4H	17.0	17.4	17.4	17.8	18.3	17.0	17.4	17.4	17.8	18.3
	6H	16.9	17.4	17.4	17.7	18.1	16.9	17.4	17.4	17.7	18.1
	8H	16.8	17.3	17.3	17.6	18.0	16.8	17.3	17.3	17.6	18.0
	12H	16.8	17.1	17.3	17.5	18.0	16.8	17.1	17.3	17.5	18.0
8H	4H	16.8	17.3	17.3	17.6	18.0	16.8	17.3	17.3	17.6	18.0
	6H	16.8	17.1	17.3	17.5	18.0	16.8	17.1	17.3	17.5	18.0
	8H	16.8	17.0	17.3	17.5	18.1	16.8	17.0	17.3	17.5	18.1
	12H	16.7	16.9	17.3	17.4	18.0	16.7	16.9	17.3	17.4	18.0
12H	4H	16.7	17.1	17.2	17.5	18.0	16.7	17.1	17.2	17.5	18.0
	6H	16.8	17.0	17.3	17.5	18.1	16.8	17.0	17.3	17.5	18.1
	8H	16.7	16.9	17.3	17.4	18.0	16.7	16.9	17.3	17.4	18.0
Variation of the observer position for the luminaire distance S											
S = 1.0H		6.4 / -12.0					6.4 / -12.0				
S = 1.5H		9.2 / -13.7					9.2 / -13.7				
S = 2.0H		11.2 / -14.4					11.2 / -14.4				
Standard table		n/a					n/a				
Correction summand		n/a					n/a				
Corrected glare indices referring to 1192 lm total luminous flux											

COEFFICIENTS OF UTILIZATION

Ceiling reflectance	80				70				50			30			10			0
Wall reflectance	70	50	30	10	70	50	30	10	50	30	10	50	30	10	50	30	10	0
Floor reflectance	20	20	20	20	20	20	20	20	20	20	20	20	20	20	20	20	20	0
RCR	(RCR: Room Cavity Ratio) Room Values are expressed as percentage of Lumens delivered to the task surface																	
0	119	119	119	119	116	116	116	116	111	111	111	106	106	106	102	102	102	100
1	114	112	110	108	112	110	108	106	106	104	103	102	101	100	99	98	97	95
2	110	105	102	99	108	104	101	98	101	98	96	98	96	94	95	93	92	90
3	105	100	96	92	103	98	95	91	96	93	90	94	91	89	91	89	87	86
4	101	95	90	86	99	94	89	86	92	88	85	90	86	84	88	85	83	82
5	97	90	85	82	96	89	85	81	87	83	80	86	82	80	84	81	79	78
6	93	86	81	77	92	85	80	77	84	79	76	82	79	76	81	78	75	74
7	90	82	77	73	88	81	76	73	80	76	73	79	75	72	78	75	72	71
8	86	78	73	70	85	78	73	70	77	72	69	76	72	69	75	71	69	68
9	83	75	70	67	82	74	70	66	74	69	66	73	69	66	72	68	66	65
10	80	72	67	64	79	71	67	64	71	66	63	70	66	63	69	66	63	62

LAMPS (number of lamps)

LUMINAIRE BUDGETARY DIAGRAM



ZONAL LUMEN SUMMARY

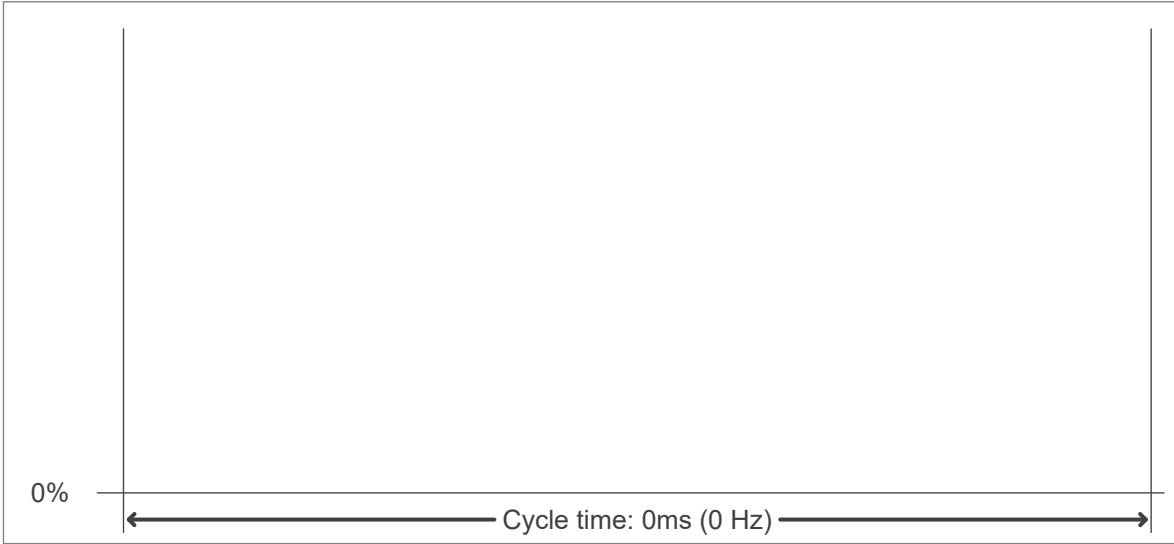
0°-10°	10°-20°	20°-30°	30°-40°	40°-50°	50°-60°	60°-70°	70°-80°	80°-90°
206 lm	488 lm	383 lm	97.6 lm	9.30 lm	3.36 lm	1.04 lm	0.525 lm	0.213 lm
90°-100°	100°-110°	110°-120°	120°-130°	130°-140°	140°-150°	150°-160°	160°-170°	170°-180°
0.074 lm	0.077 lm	0.093 lm	0.129 lm	0.274 lm	0.481 lm	0.547 lm	0.369 lm	0.109 lm

FLICKER

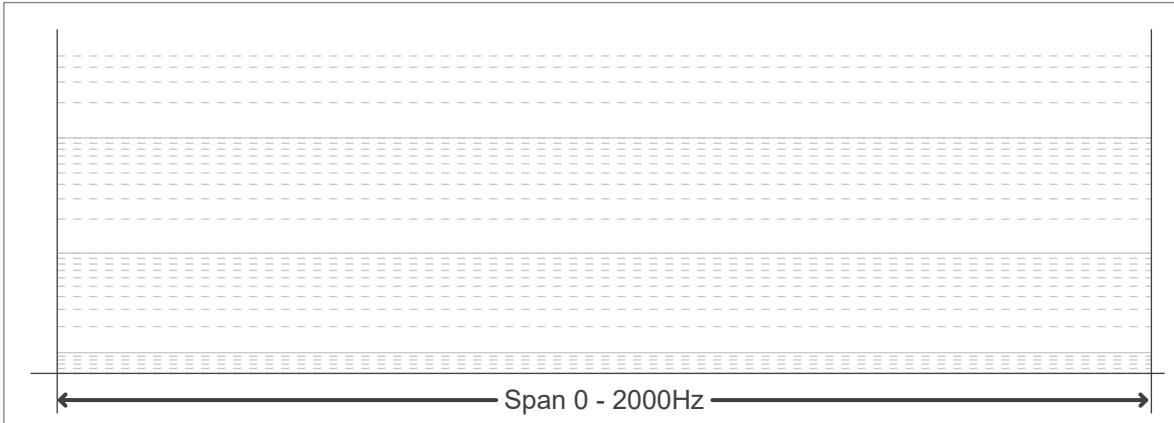
FLICKER CURVE (COMPLETE SAMPLED)



FLICKER FRAME (FRAME OF ONE FLICKER



FLICKER FFT (FREQUENCY SCOPE OF FLICKER



FLICKER RESULTS:

Flicker frequency:	n/a Hz
Flicker index:	n/a
Flicker percentage:	n/a %
SVM: (Visual flicker)	n/a

FLICKER CONDITIONS:

Sample rate:	n/a samples/second
--------------	--------------------